

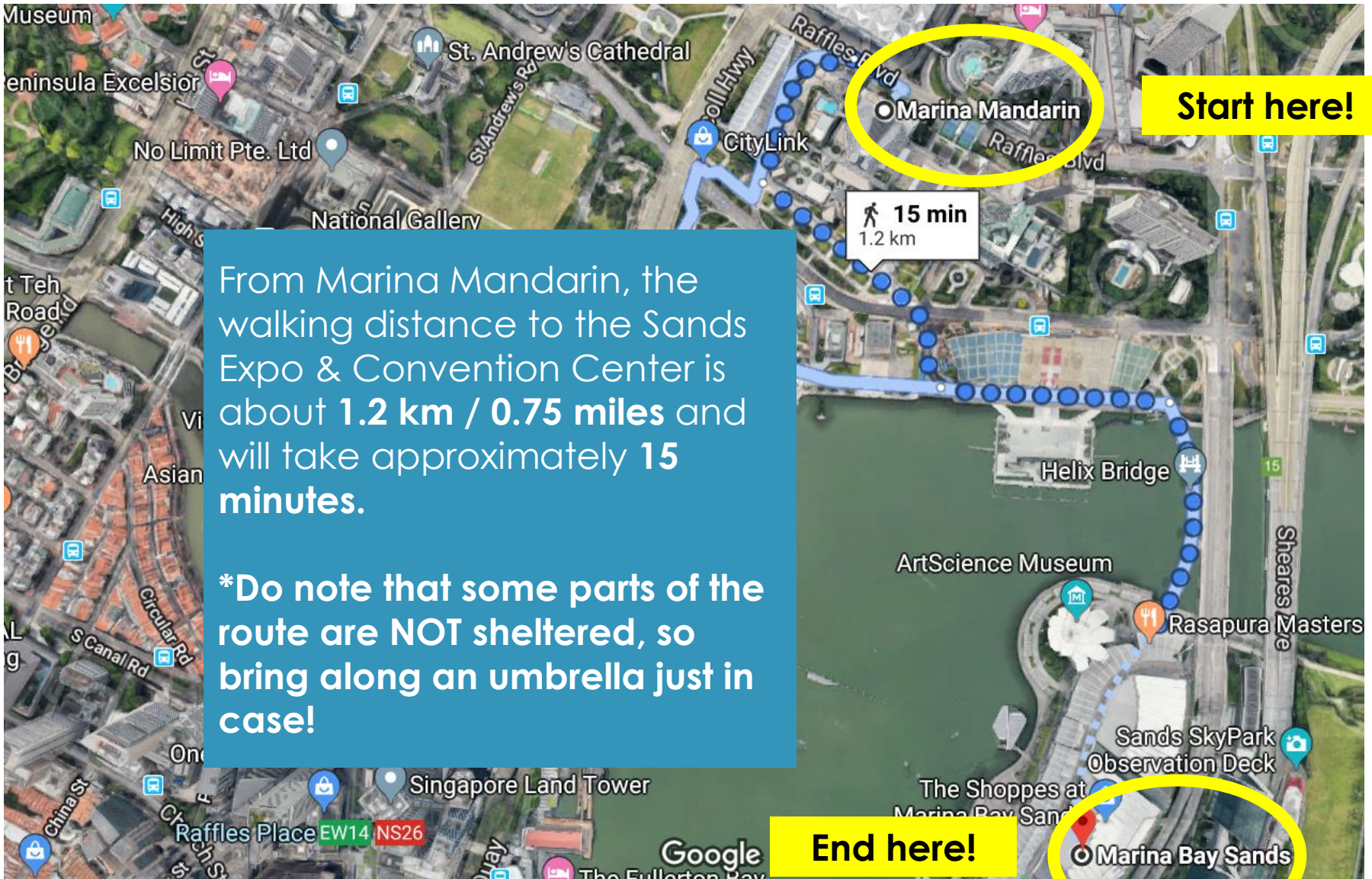


**Getting to ICMAT 2019**  
**Sands Expo & Convention Center**  
*a step by step walkthrough guide*



**From Marina Mandarin Hotel**  
6 Raffles Blvd, Singapore 039594





**Start here!**

From Marina Mandarin, the walking distance to the Sands Expo & Convention Center is about **1.2 km / 0.75 miles** and will take approximately **15 minutes**.

**\*Do note that some parts of the route are NOT sheltered, so bring along an umbrella just in case!**

**End here!**

**Marina Bay Sands**





End here!

Start here!

15 min  
1.2 km

Marina Bay Sands

ArtScience Museum

Marina Mandarin

Esplanade CC3

Suntec City

Millenia Walk

Singapore Flyer

St. Andrew

Sheares Ave

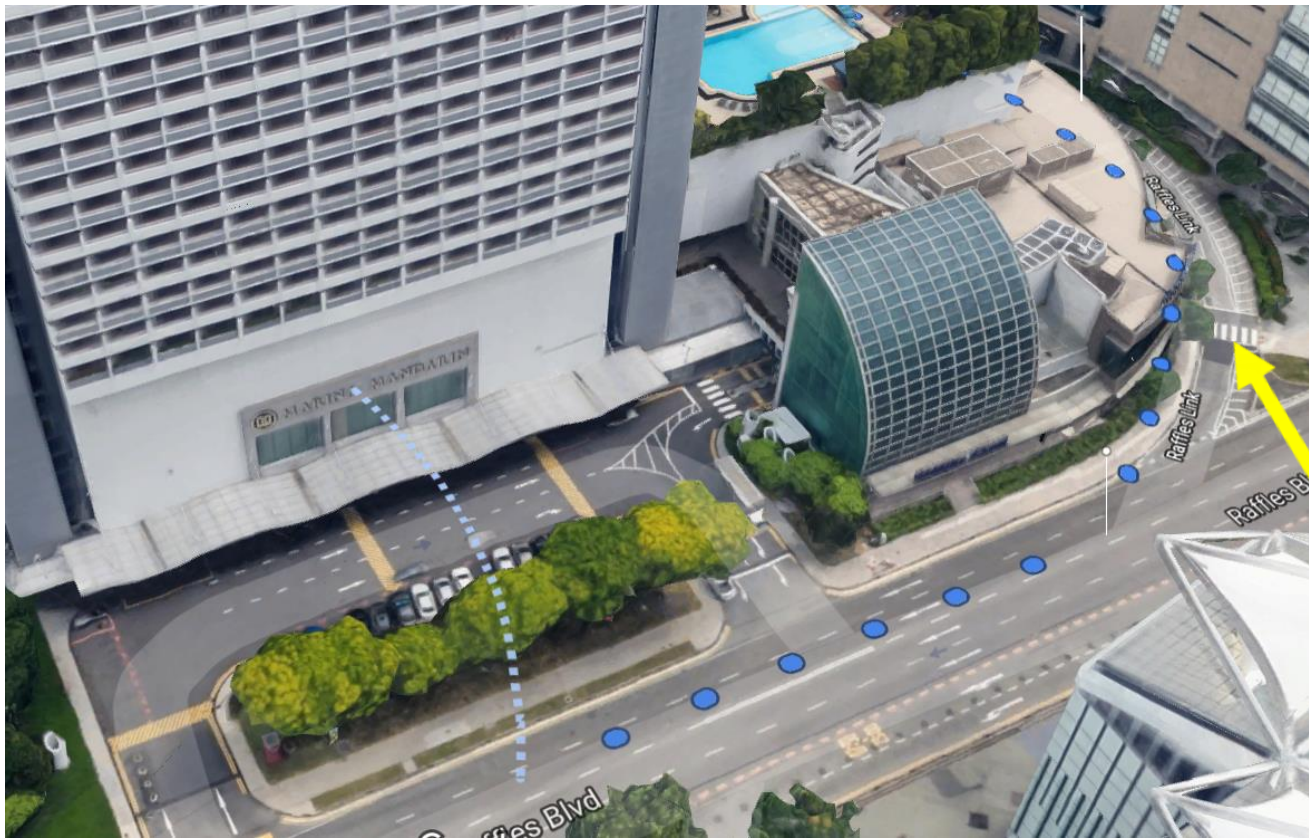
Esplanade Dr

Raffles Ave

Raffles Plz

15



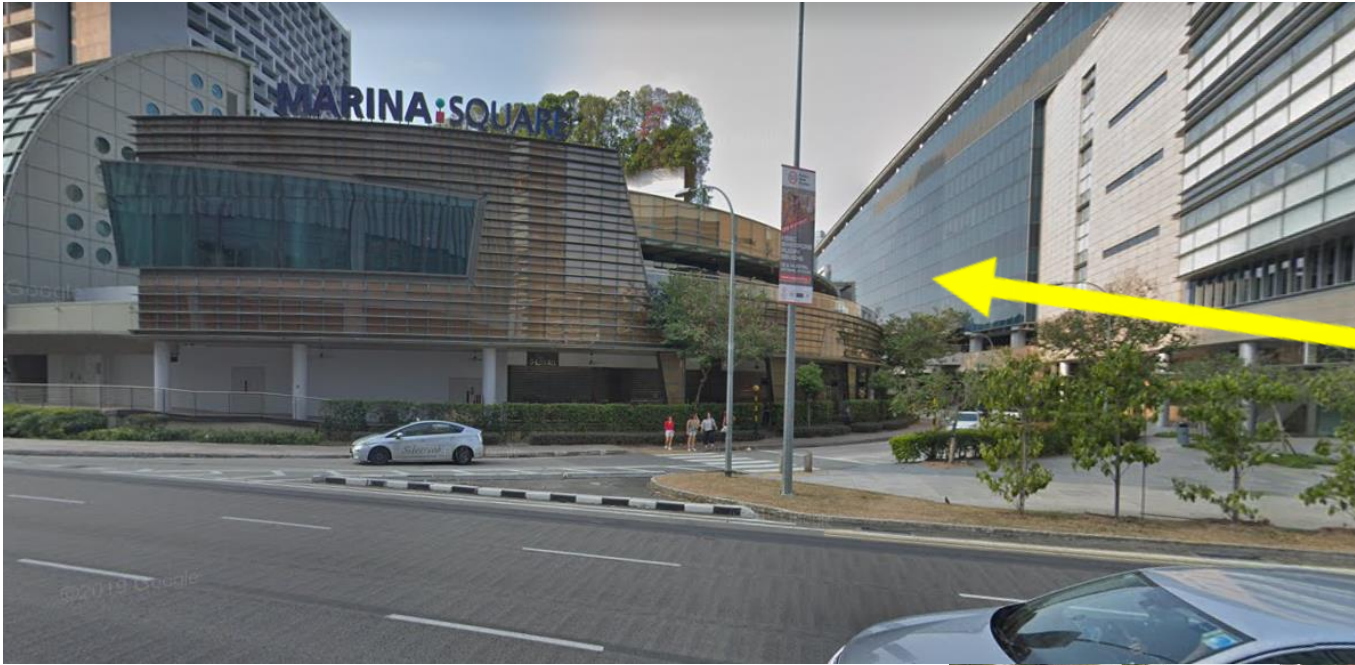


Upon exiting the hotel's main lobby, turn LEFT (away from the overhead bridge)

Follow the pavement, it will curve into a small road away from the main road.



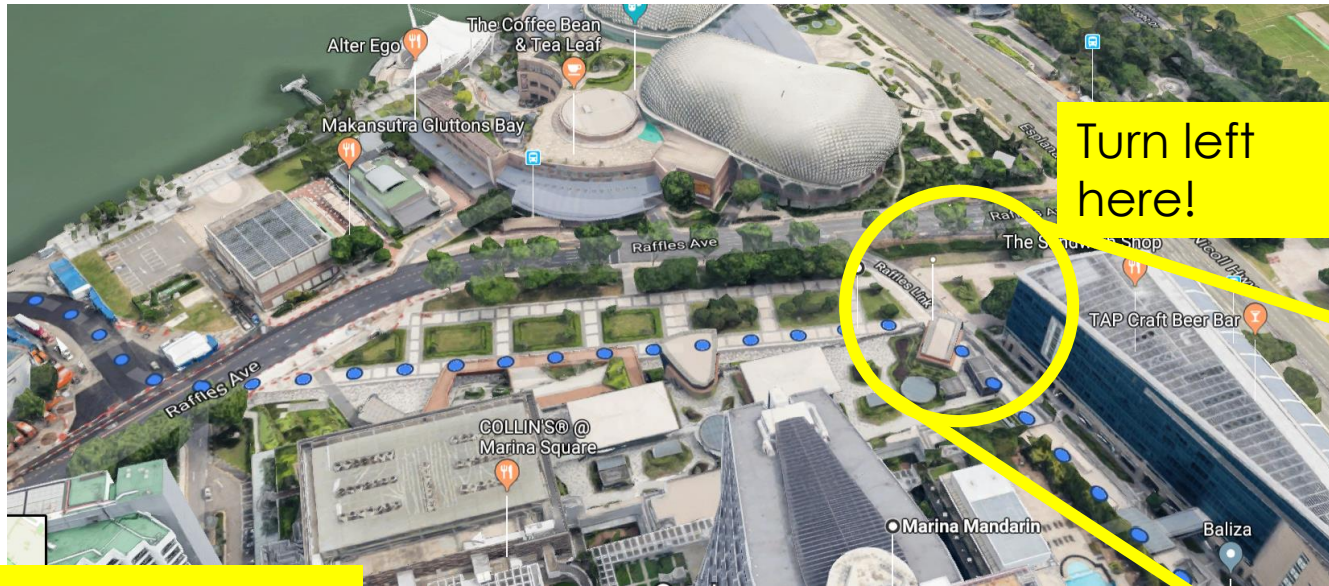




Continue down  
the same road







Turn left here!

You are coming down this road.

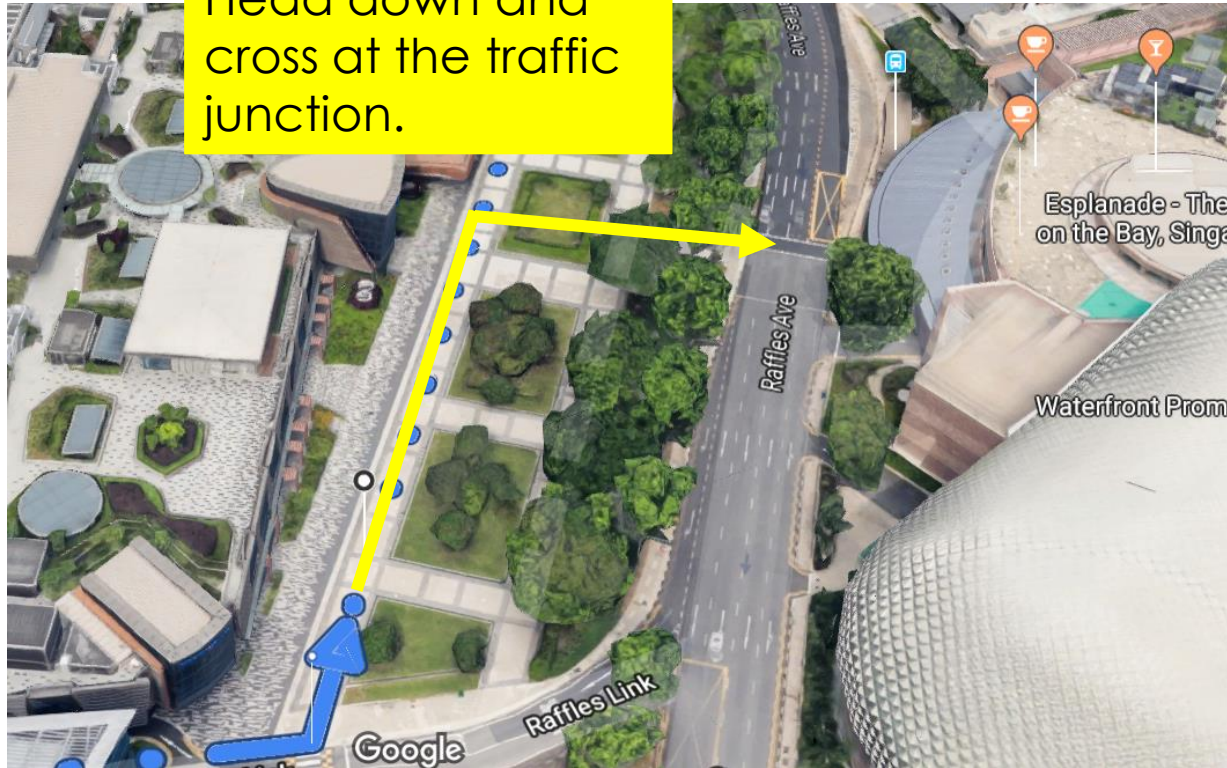


Street view: You should turn left and follow along the Marina Square building!

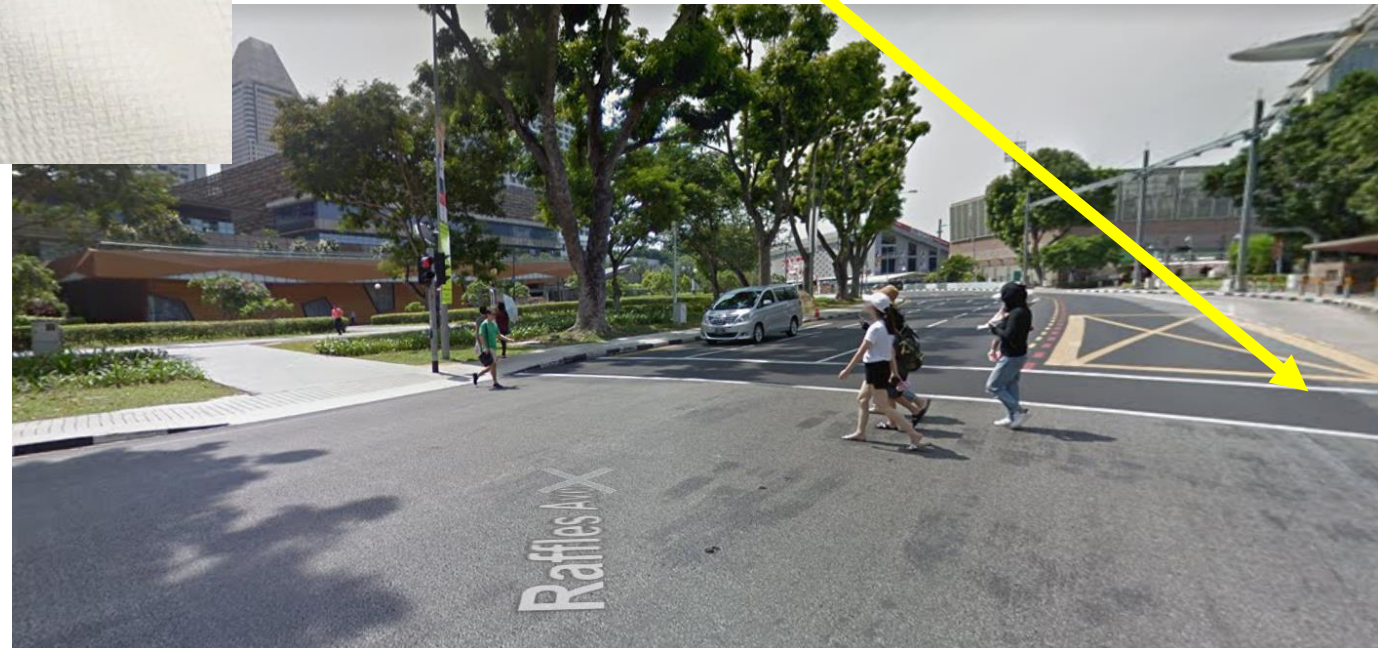




Head down and cross at the traffic junction.



You should see the Esplanade (spiky building), cross towards it.







After crossing, follow the road & walk past the bus stop.



Turn in here, towards the palm shaped structure.

Bus stop was here.



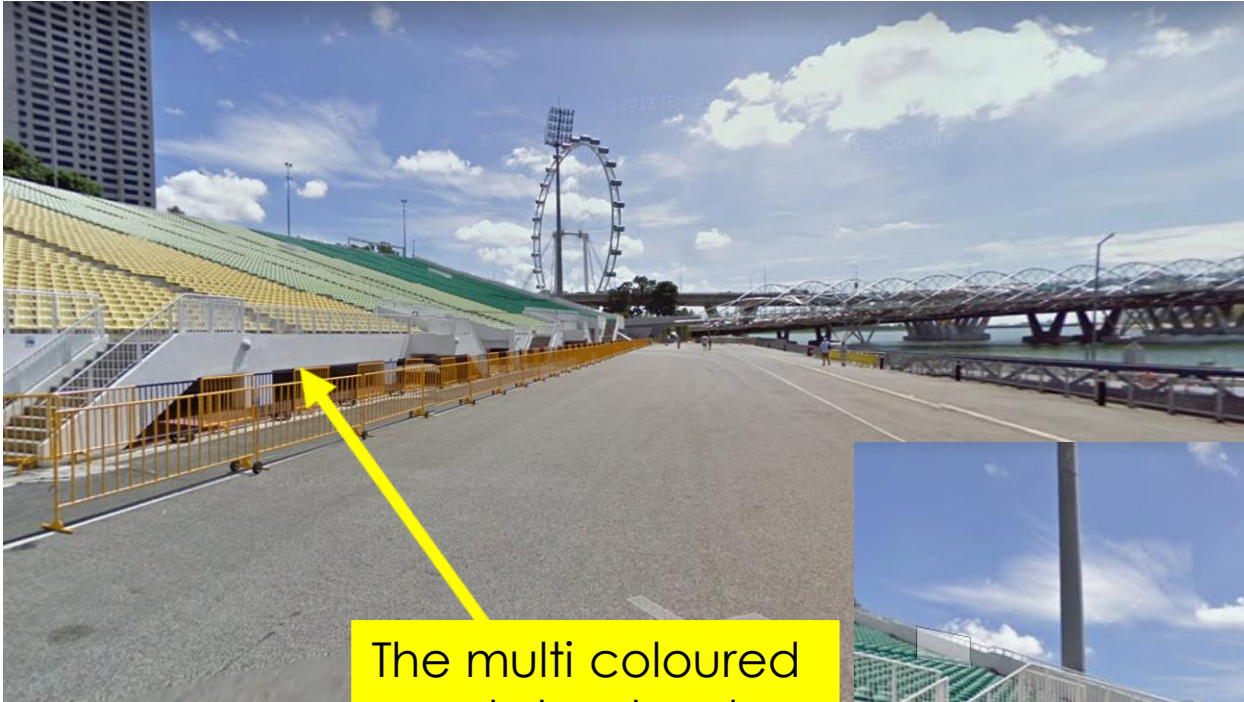
Keep walking  
towards the palm  
shaped structure.



You should see the  
Singapore Flyer.  
Walk towards it.







The multi coloured spectator stands should be on your left.



When you reach the end, take the stairs up and cross the Helix Bridge



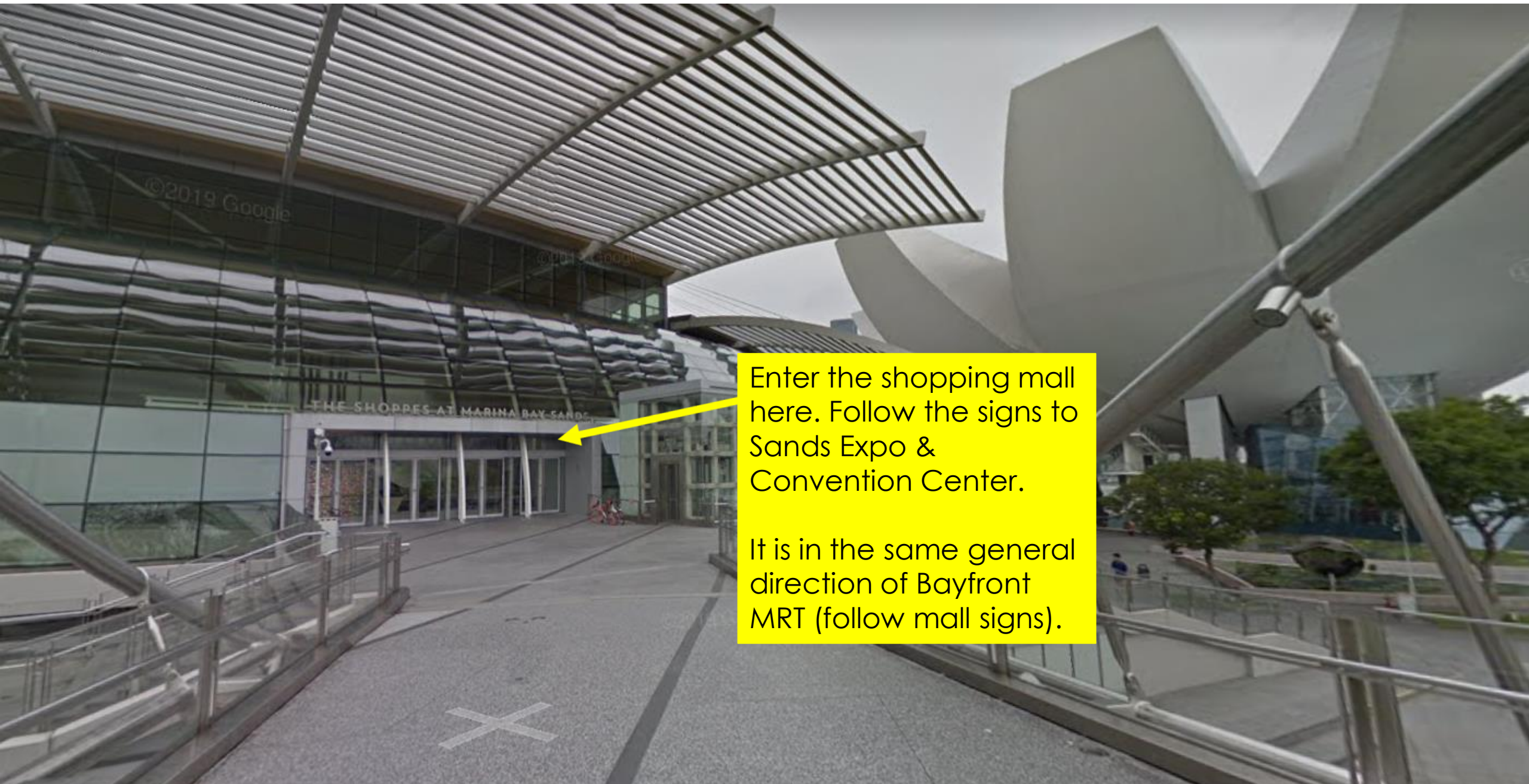


Follow the bridge  
till the end.

Almost there!

You can see the  
iconic Marina Bay  
Sands towers from  
here.





Enter the shopping mall here. Follow the signs to Sands Expo & Convention Center.

It is in the same general direction of Bayfront MRT (follow mall signs).





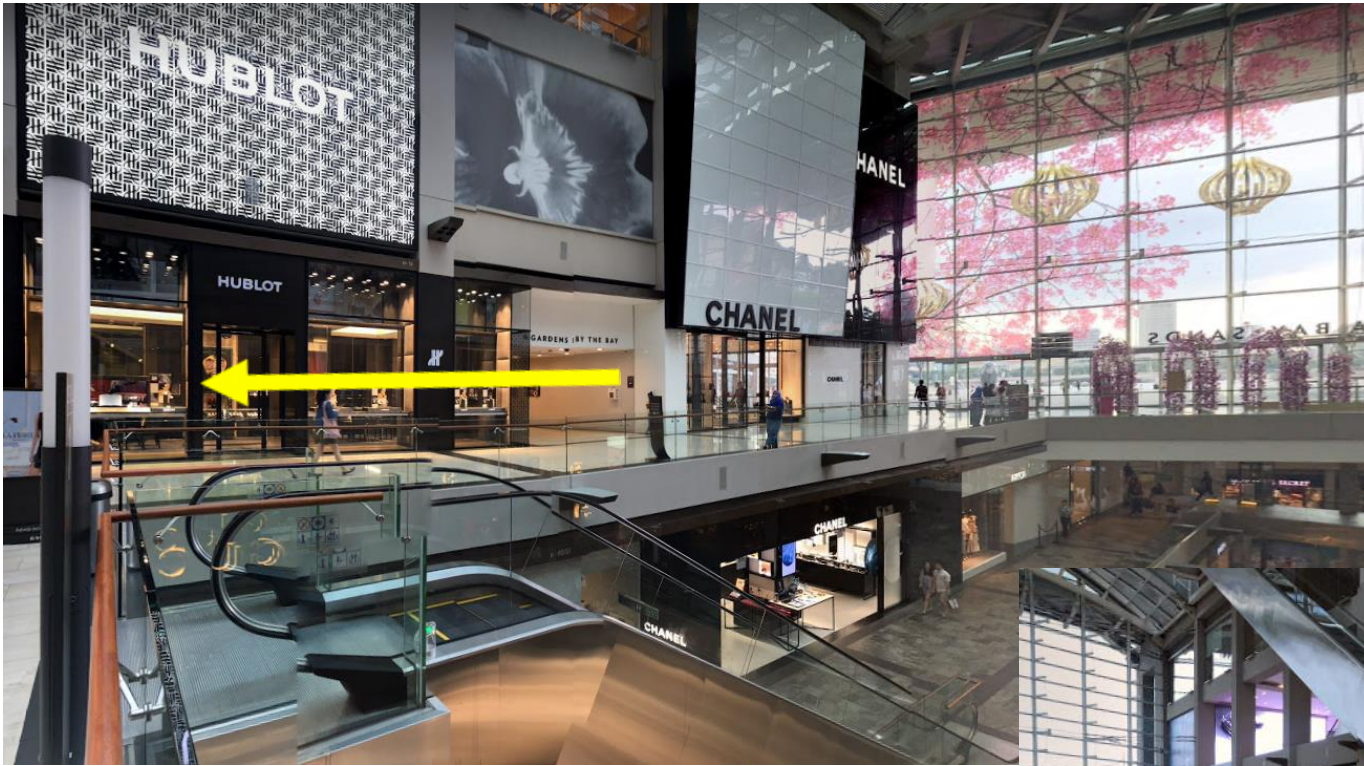
Chanel is here.



General directions from entrance to Sands Expo and Convention Center. Follow the red arrows.

BAY LEVEL, L1





If you are confused, try to locate Chanel using the mall directory. With Chanel on your right, follow the path down.



Turn here at the end of the road.



